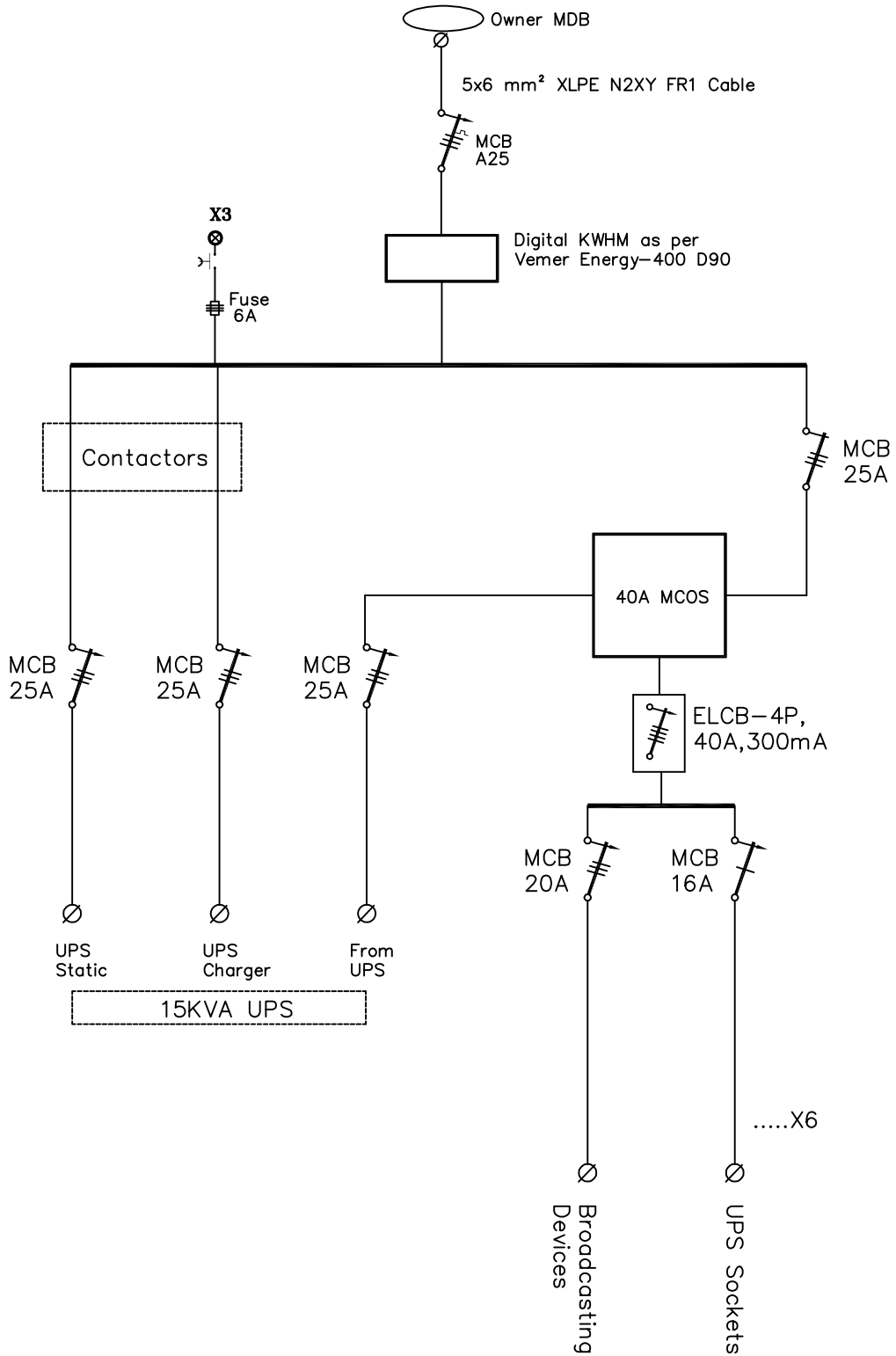


مخطط لوحة الكهرباء  
برج الإذاعة الجديد في  
رام الله

DB-AAUP



\*\* ALL MCB'S ARE OF  $I_{cu} = 10K.A$  - (IEC/EN 60947-2)

\*\* METAL SHEET IS 2 MM.

\*\* PAINTING WITH POWDER COATING RAL 7035 LIGHT GREY.

\*\* Contactors must be controlled by NVR & 2Min. Delay timer with required protective devices.

\*\* DB-AAUP must include 20kA surge arrestor with all earth connections.